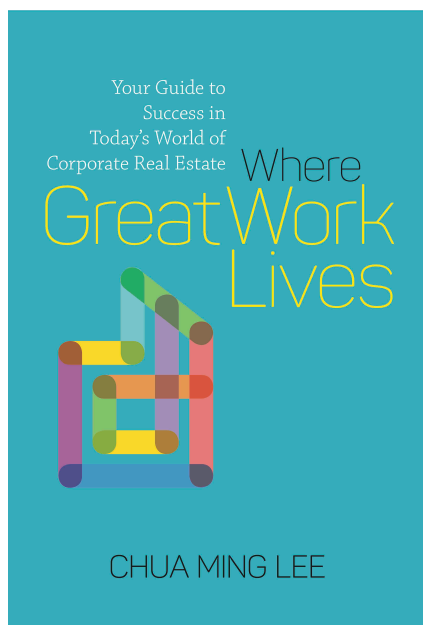


RELEASE 2019

CHUA MING LEE

## WHERE GREAT WORK LIVES

### Your Guide to Success to Today's World of Corporate Real Estate



CORPORATE REAL ESTATE (CRE) is changing fast. In a world where clients need every advantage, CRE—a company's means of housing its operations—is coming to the fore of corporate strategy. CRE professionals are no longer simply property hunters or facilities managers, but valuable consultants and partners whose input can make or lose millions. In this book, veteran CRE representative Chua Ming Lee distils her decades of experience into clear, simple lessons that anyone can learn and apply. Peppared with invaluable perspectives and lessons from case studies, *Where Great Work Lives* is your essential guide to building your career as a trusted, successful CRE professional.

Recommended Retail Price: S\$42.00 [excluding GST] | Singapore & Malaysia

Recommended Retail Price : USD30.00 [excluding freight] | Rest of the World

ISBN: 978-981-11-9316-3 [hardback] | ISBN: 978-981-11-9317-0 [ebook]

Specs: 200 pages | 210mm x 140mm

Published by Write Editions® 2019 | [writeeditions.com](http://writeeditions.com) | [publisher@writeeditions.com](mailto:publisher@writeeditions.com)

Available at all major bookstores from February 2019

## ABOUT THE AUTHOR



CHUA MING LEE has more than 20 years of leadership, business and industry experience in the occupier services arena on a global scale. Ming Lee is Managing Director, Head of Account Management, Global Occupiers Services APAC at Cushman and Wakefield (C&W). She has recently moved to focus fully in strengthening the Account Management capabilities in APAC. Her role includes strengthening client relationship and driving business growth across different service offerings by providing tailored, forward-focused solutions to outsourcing contracts from MNC clients on their corporate real estate portfolios, and ensuring they are executed well and achieve their aims on an account level.

## PRAISE FOR WHERE GREAT WORK LIVES

“I HOPE THIS BOOK GIVES YOU THE ENCOURAGING PRIMER YOU NEED TO ENTER THIS VARIED, FAST-MOVING AND COMPETITIVE FIELD.

JAMES BRUCE | EXECUTIVE VICE PRESIDENT | 2018 | GLOBAL ENTERPRISE SERVICES | UNILEVER | *In His Foreword*

“MING LEE WRITES WITH THE AUTHORITY OF SOMEONE WHO HAS GROWN UP IN THE INDUSTRY IN ITS FORMATIVE YEARS, AND KNOWS THE CORE FUNDAMENTALS TO PASS ON TO FUTURE CRE PROFESSIONALS.

JOHN FORREST | GLOBAL CEO, CORPORATE SOLUTIONS | JONES LANG LASALLE

“MING LEE IS TRULY A CONSUMMATE CRE PROFESSIONAL WITH A PASSION TO SHARE AND TO GIVE. SHE HAS RUN THE GAMUT OF THE TRADE OVER DECADES OF EXPERIENCE, AND NOW SHARES HER SECRETS WITH THOSE LOOKING TO MAKE THE INDUSTRY BETTER. A MUST-READ!

LAWRENCE YIP | SENIOR VICE PRESIDENT AND CHIEF MARKETING OFFICER | SEMBCORP DEVELOPMENT LIMITED